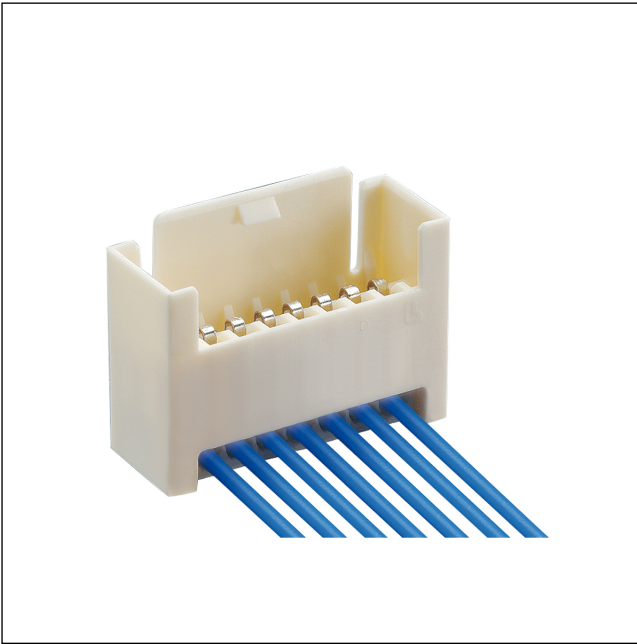


35

3541-1

RAST 2.5 connectors, pitch 2.5/5.0 mm

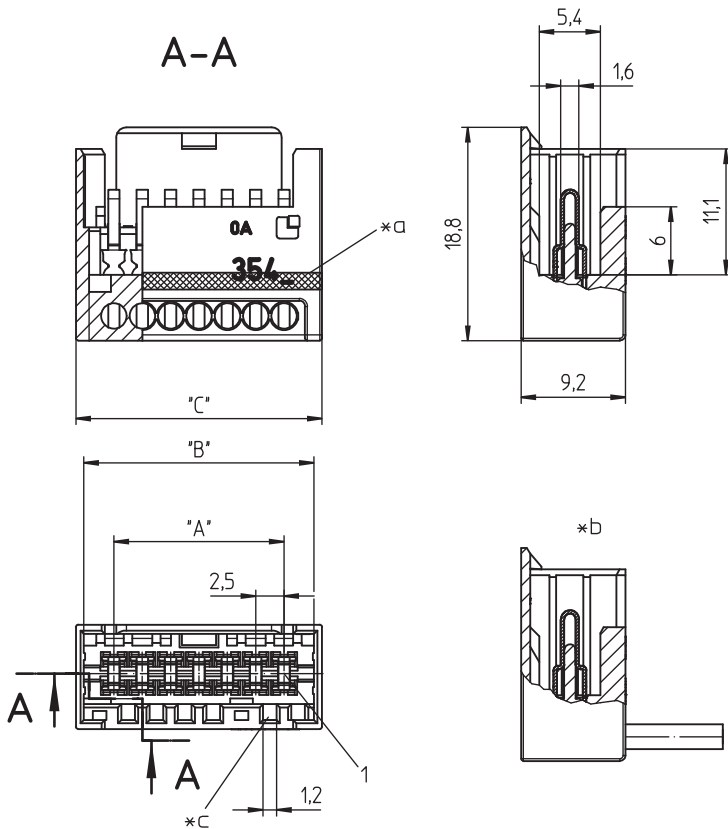


RAST 2.5 pin header, insulation displacement technology (IDT), with locking latch
contact pitch 2.5 mm

Approvals:



35 3541-1



- *a blue color marking on 3541-1 (M..)S01
- *b terminated connector
- *c keying

Environmental conditions

Temperature range -40 °C/+120 °C¹

¹ upper limit temperature (insulating body) RTI (electrical) of the UL Yellow Card


Materials

Insulating body PA GF, V-0 according to UL94 – 3541-1 M13S01¹

Contact pin CuSn, tin-plated

¹ component glow wire resistant (GWT 750 °C), testing acc. to IEC 60695-2-11, assessment acc. to IEC 60335-1 (flame < 2 s)

Mechanical data

Keying proposals [at www.lumberg.com](http://www.lumberg.com) 

Connectable conductors for IDT area

Construction discrete conductor, notched flat cable 2.5 mm

Section max. 0.50 mm²

Insulation diameter ≤ 2.2 mm

Approved cables [at www.lumberg.com](http://www.lumberg.com) 

Electrical data (at T_{amb} 20 °C)

Rated current 4 A (T_{amb} 60 °C, VDE)
2 A (T_{amb} 110 °C, VDE)
4 A (0.34 mm², cULus)
2 A (0.25 mm², cULus)

Rated voltage 32 V AC¹

Material group IIIa (IEC)/2 (UL) (CTI ≥ 250)¹

Creepage distance 1.32 mm

Clearance 1.50 mm

Insulation resistance > 1 GΩ


¹ according to IEC 60664/DIN EN 60664, CTI UL classification according to ANSI/UL 746A

Associated products

Counterparts


 3521


 3521-2

 352100

Harnessing equipment

 HA3...e

 HA354e-ST

 HZ354

 KHP354


 VARICON 7000

 VARICON 7000-DC

 VARICON 7000-DC-CR


 VARICON 7000-Eco

 VARICON 7000-Eco-CR

 VARICON 7000-Inline

 VARICON 7000-Inline-CR

 VARICON 7000-RD

 VARICON 7000-RD-CR

35

3541-1



Designation	Pole Number	PU (Pieces)	MDQ (Pieces)	Dimensions		
				A (mm)	B (mm)	C (mm)
3541-1 02	2	500	1000	2.5	7.6	9.2
3541-1 03	3	500	1000	5.0	10.1	11.7
3541-1 04	4	500	1000	7.5	12.6	14.2
3541-1 05	5	500	1000	10.0	15.1	16.7
3541-1 06	6	500	1000	12.5	17.6	19.2
3541-1 07	7	500	1000	15.0	20.1	21.7
3541-1 08	8	500	1000	17.5	22.6	24.2
3541-1 09	9	500	1000	20.0	25.1	26.7
3541-1 10	10	500	1000	22.5	27.6	29.2
3541-1 11	11	500	1000	25.0	30.1	31.7
3541-1 12	12	500	1000	27.5	32.6	34.2
3541-1 13	13	500	1000	30.0	35.1	36.7
3541-1 14	14	500	1000	32.5	37.6	39.2
3541-1 15	15	500	1000	35.0	40.1	41.7
3541-1 16	16	500	1000	37.5	42.6	44.2
3541-1 17	17	500	1000	40.0	45.1	46.7
3541-1 18	18	500	1000	42.5	47.6	49.2
3541-1 19	19	500	1000	45.0	50.1	51.7
3541-1 20	20	500	1000	47.5	52.6	54.2

Designation to be completed by further details (e.g. for keying, color or material options).

Packaging:

in bulk, in a cardboard box – in bar stock carriers upon request